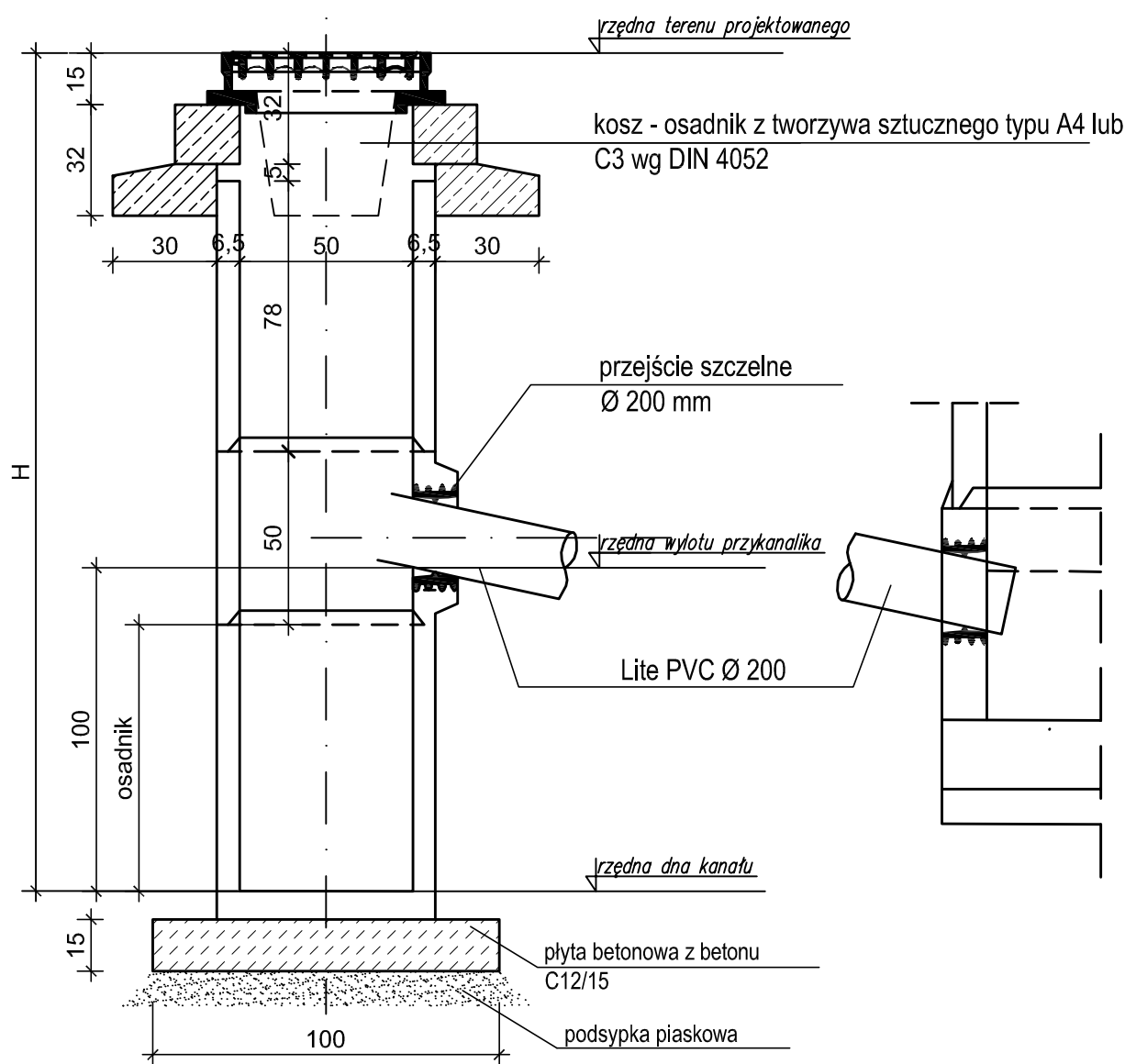


Technical drawing of a circular structure, likely a manhole or access point, showing a central rectangular opening with a curved internal profile. The drawing includes dimensions: 635 (width of the opening), 440 (height of the opening), 1230 (total width), and 500mm (diameter of the pipe). The drawing is labeled 'Rysunek: Schemat wp...' and 'Projektant: mgr inż. upr. bu...'.

WPUST ULICZNY ŻELIWNY
klasy D400kN
pod kratą wpustu kosz na śmieci
1:20



PRZEKRÓJ I-I